

I PATROL + SEAMO

LIFELINE ON SUPPORT FOR ROUND SEAM METAL ROOFS



PRACTICAL

Device to be fastened to the seam with four clamps, without the need to make openings in the sheet metal.



SAFE

The fastening is done on two round seams of the sheet, to ensure greater strength.

SIMPLE

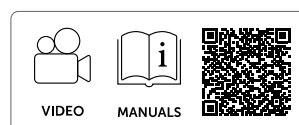
Fast and safe assembly on different spacing between seams.



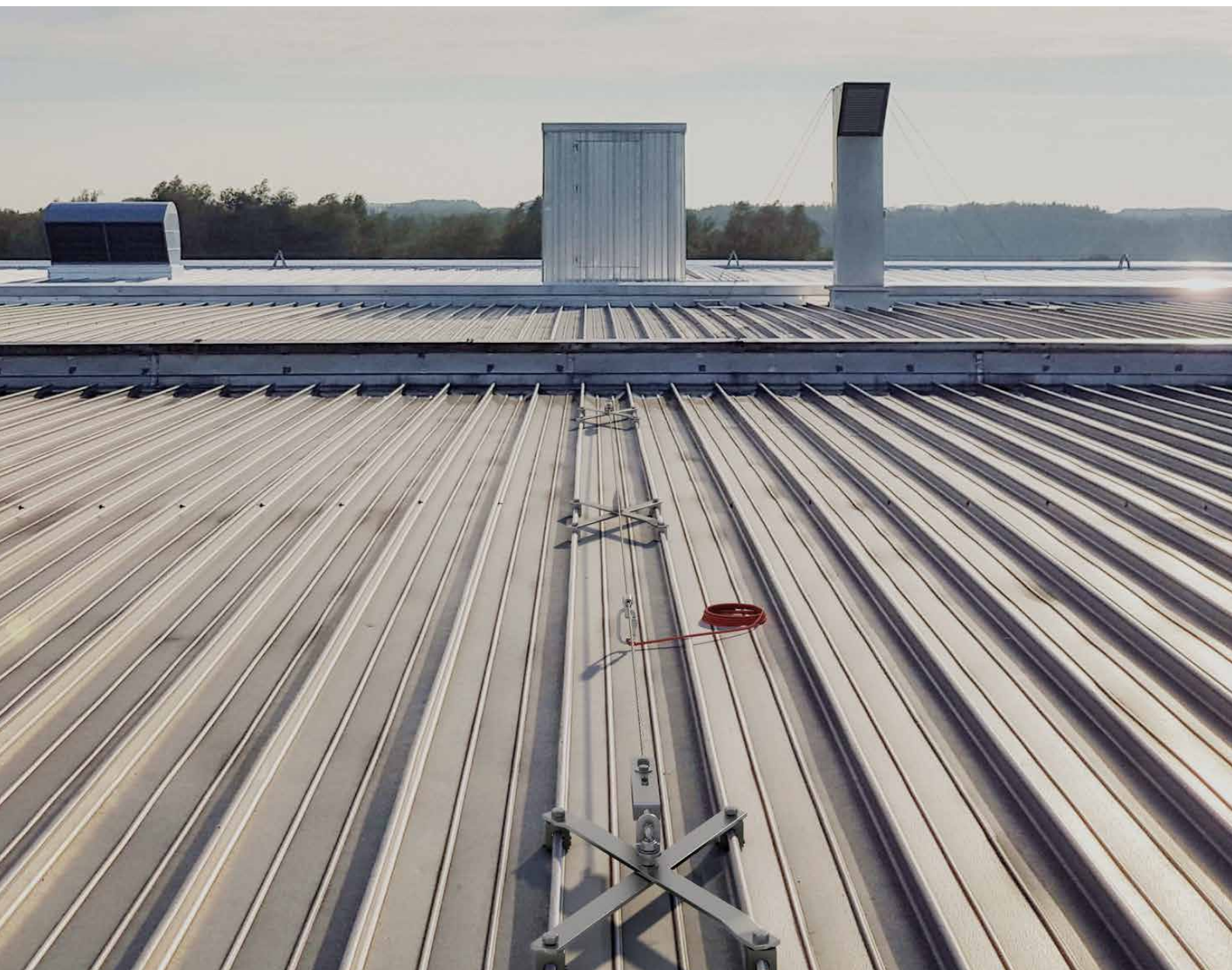
LOAD DIRECTION



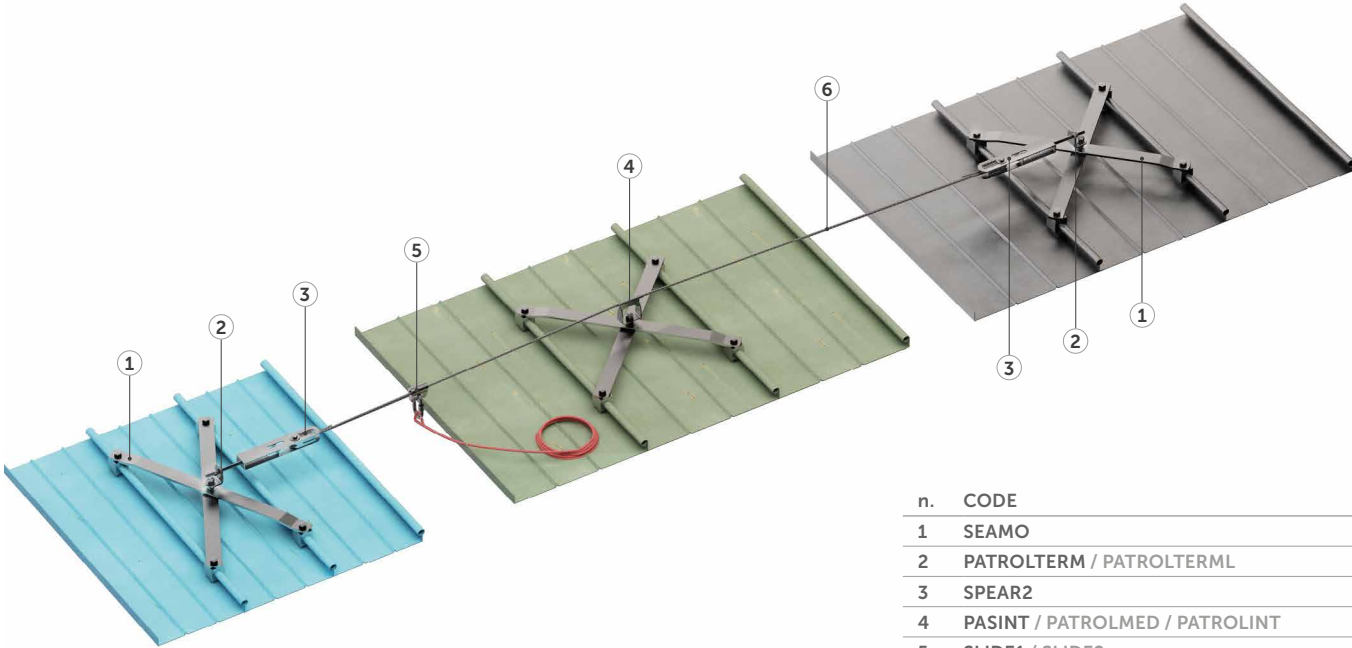
TYPES OF APPLICATION



▼ *Installation of a PATROL lifeline with SEAMO brackets on round seams*



PATROL LIFELINE COMPONENTS



n.	CODE
1	SEAMO
2	PATROLTERM / PATROLTERML
3	SPEAR2
4	PASINT / PATROLMED / PATROLINT
5	SLIDE1 / SLIDE2
6	CABLE

TECHNICAL DATA*

substructure	minimum thickness
<div> ALUFALZ, INTERFALZ, BEMO ROOF, KALZIP</div> <div>Fe</div>	0,6 mm
<div>Al</div>	0,8 mm

with SPEAR2		
minimum spacing	X_{min} [m]	4
maximum spacing	X_{max} [m]	10
maximum recommended system length	L [m]	50
maximum deflection	Y_{max} [m]	1,80

* The values indicated are the result of experimental tests carried out under the supervision of third parties in accordance with the standard referred to. For a calculation report with minimum distances according to the relevant standard requirements, the substructure must be checked by a qualified engineer before installation.

SEAMO | CODES AND DIMENSIONS

A2
AISI 304

CODE	material	B [mm]	pcs
SEAMO	AISI 304 stainless steel grade 1.4301 - EN AW 6061 T6	305-500	1